



CONCEPT FOR CONSTRUCTION OF A NEW PIT LATRINE

PROJECT TITLE:

Improved Sanitation and hygiene among school children in rural areas through Construction of a 6 stance Ventilation Improved Pit (VIP) Latrine at SHAK Junior School

PROJECT LOCATION:

**SHAK Junior School, Bulabakulu Village, Nambi Parish,
Zirobwe Sub County Luwero District, Uganda**

SUBMITTED TO:

**The Association of Friends and Supporters of SHAK Junior School in
Germany**

PREPARED BY:

A handwritten signature in blue ink, appearing to read 'Saad Luyinda', is placed above the printed name.

**SAAD LUYINDA
SCHOOL DIRECTOR**

March 2023

1.0 Introduction

SHAK Junior School is a comprehensive private mixed nursery and primary school located in Bulabakulu Village, Nambi Parish in Ziobwe Sub County. Ziobwe is one of the rural sub counties of Luwero District. The sub county harbors a predominantly peasant agricultural community characterized with high levels of illiteracy and low HH incomes. It is one of the areas that are still nursing the disastrous effects of the armed NRA liberation war of the 1980s. The war left many families impoverished with high numbers of orphans and vulnerable children, high rates of disease including HIV/AIDs, shattered agricultural production among others. As result of this many children continue to live under deprivation and therefore miss out on the basic needs and rights particularly the right to education.

SHAK Junior School is premised on the aspiration for establishing a successful and sustainable educational center that provides affordable, high quality comprehensive education services to children especially those from low income households in the community. Driven by the principle of social inclusion, our approach is to create a conducive environment that embraces social, religious and cultural diversity while supporting every individual learner to achieve their full potential and become productive members of society.

Our ultimate goal is to give every student the best education and equip them with skills to adapt to and flourish within a consistently changing world.

2.0 Our Vision

A community where all children have equal opportunity to access quality education services for sustainable development.

3.0 Our Mission

- ✓ We strive to eliminate barriers to enjoying the right to education by providing the community with a comprehensive primary school where all children receive the best possible education in a safe and secure environment.
- ✓ 4.0 Objectives
- ✓ To build a safe and secure school providing an exciting, inclusive curriculum which equips children with skills for lifelong learning and achieving high standards of living.
- ✓ To provide equal opportunities for development for all members of the school community
- ✓ To make the school a part of the community and to develop strong and productive links with community
- ✓ To recognize and value parental rights to involvement in their children's education through the development of close working relationships.
- ✓ To prepare the children to be responsible, God-fearing citizens within the community and to give them the flexibility and skills to meet the demand of a rapidly changing society
- ✓ To contribute positively to community and national development through creation of jobs for both teaching and non-teaching personnel from within and outside the community.

4.0 The context and Rationale for this project

Using proper toilets prevents the transfer of bacteria, viruses and parasites found in human excreta which otherwise contaminate water resources, soil and food. This contamination is a major cause of diarrhea, the second biggest killer of children and leads to other major diseases such as cholera, schistosomiasis and trachoma. Improving access to sanitation is a critical step towards reducing the impact of these diseases. It also helps create physical environments that enhance safety, dignity and self-esteem for learners. Safety issues are particularly important for the girl children, who otherwise risk contracting UTIs because of using dirty toilet facilities.

It is in the SHAK Junior School Water Sanitation and Hygiene (WASH) strategy to put in place well-furnished standard toilet facilities that match to the established minimum standards. These structures are well laid on our school structural lay out plan. The school desires to have separate facilities for staff, the nursery section (because of its unique characteristics) and for primary section separated for girls and boys. However due to financial constraints, the school has so far managed to put up only one (1) unit (4 stances primarily meant for nursery section). The available unit serves both female and male learners and staff. (This is quite below the required minimum by ministry of education and the district environmental and public health regulations). Over the two years of operation, the school enrollment has grown from 56 in 2019 to about 286 students in 2023. This increase has caused enormous pressure on the available school facilities including the toilets. However due to inadequate financial resources, the school management is still constrained to expand some of the toilet structures to catch up with the increased pressure.



External out look of the current toilet facility at the school



Left: Interior of the toilet facility at the school, R: Urinal Area for Boys

The fact of concern is that the lack of adequate toilet facilities poses a big health hazard to the members of the school community especially the very young ones.

Against this background, the school turns to well-wishers for a hand of support to construct a 6-stance improved Pit latrine, in order to create a better healthy and safe environment for the learners and the entire school community.

5.0 Expected outcomes of this project

The successful implementation of this project will go a long way to enable the school community have access to better toilet facilities for improved human waste management. This will help to improve general sanitation and hygiene conditions at the school by way of enhanced prevention of possible occurrence of toilet borne diseases and those associated with poor waste management among learners hence improved quality of life of both direct and indirect project beneficiaries.

According a report by WaterAid, a lack of proper school toilets threatens the health, education and safety of at least 620 million children around the world. Children at one in three schools lack access to proper toilets, putting them at risk of diarrhoea and other infections and forcing some to miss lessons altogether. From their design to their hygiene, washrooms must be maintained regularly to make sure students feel comfortable using the services. Even a loose or a broken toilet door lock could compromise a child's education; if a child feels as if he or she cannot use a facility comfortably, they may well return to a class unrelaxed, unfocussed and not in the best mind-set for learning.

It is striking and even surprising to see how seemingly minor concerns such as toilet door locks have a negative effect on a child's education and state of mind. Schools not only have a responsibility to educate, they must cultivate safe spaces for young people in the key stages of personal and individual development. Each area of a school building must be maintained to a standard which ensures a child's education and wellbeing is not compromised, where their comfort should be of fundamental concern to school staff.

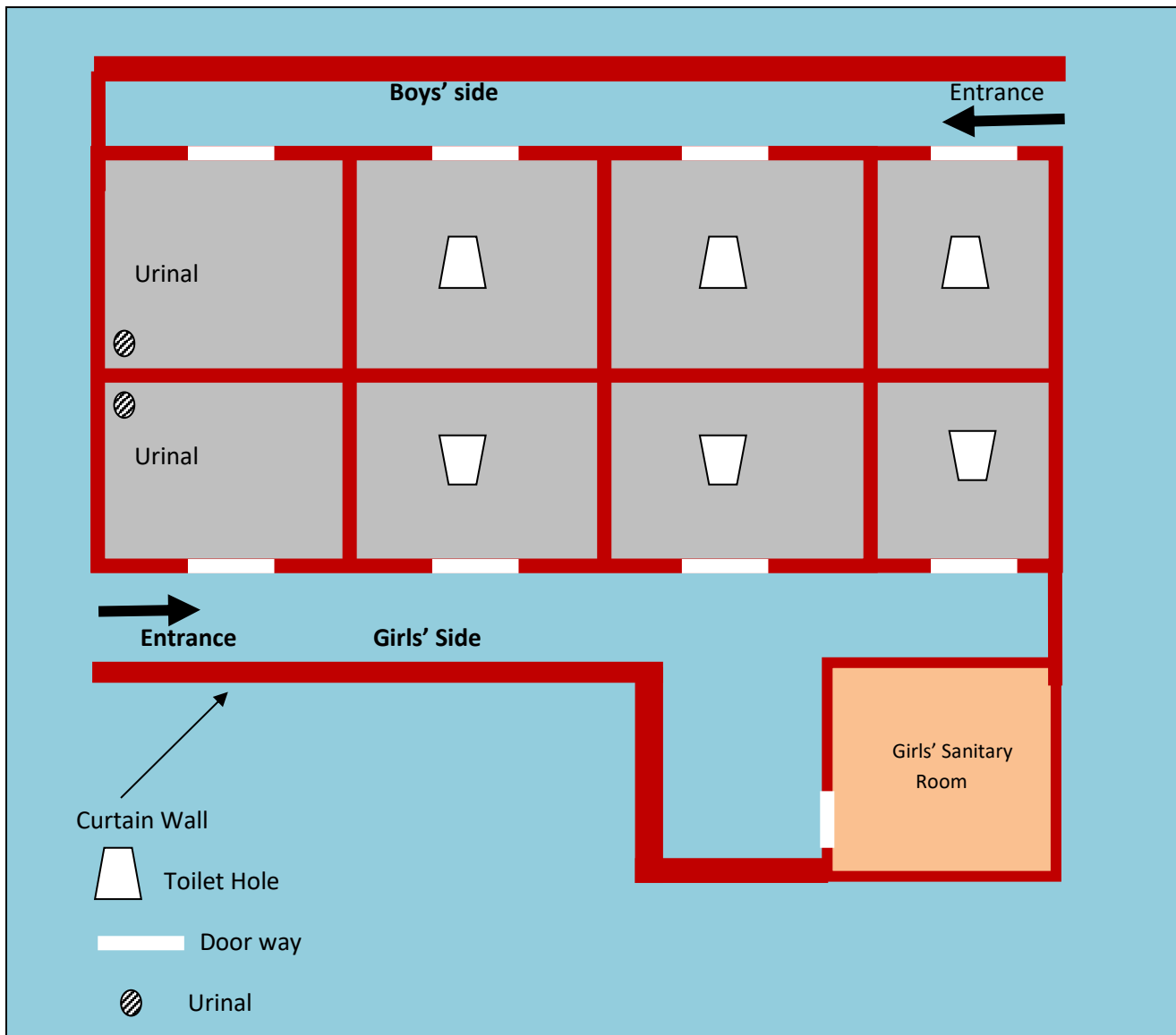
On the surface of things, it seems hard to envision why unequipped toilets could impact a child's education and wellbeing. However, if a child uses a dirty toilet facility and then let us say for some reason falls ill, then they will miss crucial learning time in the classroom. Maintaining clean and efficient toilets curbs absenteeism, as children are healthy enough to attend lessons.

But the argument does not just revolve around physical health, as mental health and wellbeing is a chief concern for school staff. If a washroom is not maintained appropriately, students will feel anxious using them, resulting in a decreased-attention span whilst at school. More responsibility must be taken to improve toilet facilities in school environments, in order to increase student wellbeing, health and productivity.

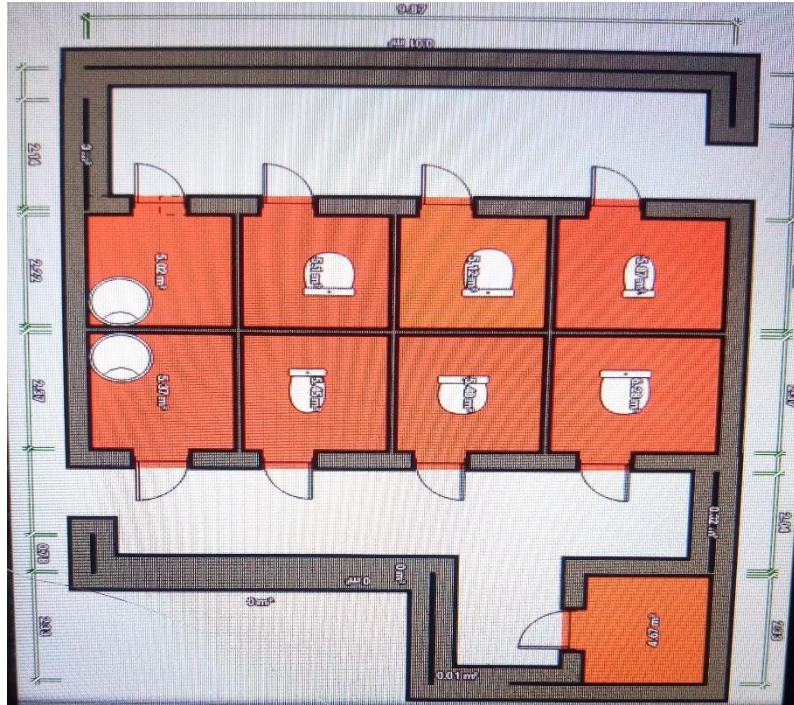
6.0 Sustainability and stakeholder involvement

- ✓ The entire school community will be mobilized to become active stakeholders in ensuring proper usage and maintenance of the established toilet facility.
- ✓ The learners especially those in upper classes will be encouraged, guided and facilitated to routinely clean the toilet facility
- ✓ The learners will be sensitized on better sanitation and hygiene practices to avoid toilet borne diseases.
- ✓ The school will collaborate with the local government health department to conduct periodical health checks and fumigation of the toilet facility for disease and vector control

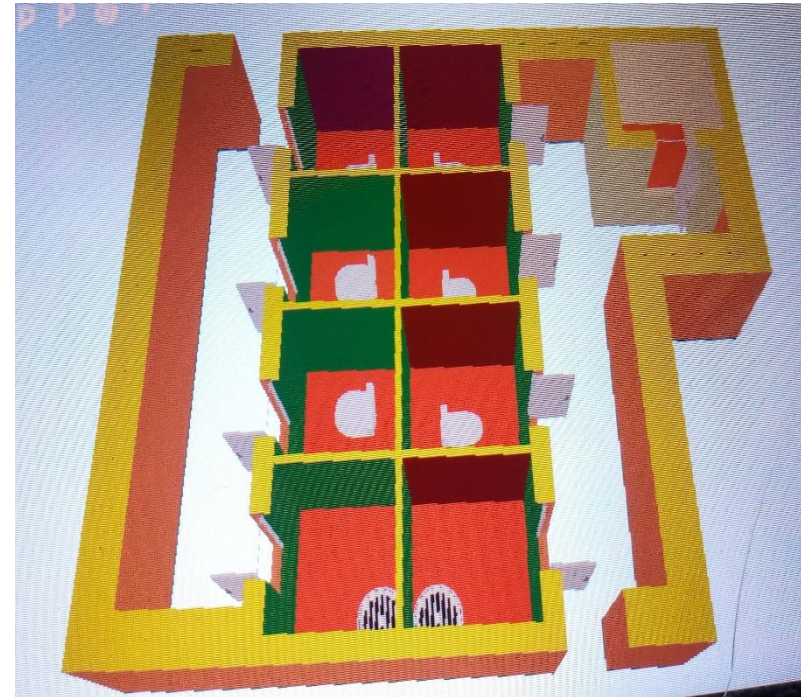
Sketch Drawing of the proposed Toilet Facility at SHAK Junior School



Simple Architectural Lay out of the toilet facility



A lay out of the floor plan for the facility



A 3D view of the wall elevation of the toilet facility as seen from a side (Girls' Entry side)

Key Notes

- The proposed depth of the pit is 70-75ft, 7ft length and 3.5ft Width.
- It will be one hole/pit dug, covered with a concrete slab fastened with a network of interwoven iron bars and wire mesh.
- A soak pit will be dug and filled with concrete stones and covered up to manage the urine from the urinals.
- There is no nearby ground water source that would be at risk of contamination.
- The school management commits to foot the cost of post construction management like, routine cleaning and renovation of the facility in the long run.

Estimated Costs

SN	Item	UoM	Qty	Unit cost	Amount	Euros
1	Lake Sand	Trips	4	140,000	560,000	147
2	Plaster Sand	Trips	4	100,000	400,000	105
3	Cement	bags	28	37,000	1,036,000	273
4	Bricks	Trips	4	170,000	680,000	179
5	Iron Sheet	Sheets	18	47,000	846,000	223
6	Timber	Lumpsum	30	10,000	300,000	79
7	Facia board	Pcs	10	20,000	200,000	53
8	Nails	Lumpsum	1	250,000	250,000	66
9	Iron Bars	pieces	20	42,000	840,000	221
10	Wire mesh	Pcs	6	40,000	240,000	63
11	Paint Undercoat	20Ltr Jericans	3	70,000	210,000	55
12	paint	4 ltr Tins	5	80,000	400,000	105
13	Hard core Stones	Trips	2	150,000	300,000	79
14	Concrete stones	Trips	1	180,000	180,000	47
15	Door shutters	Pcs	11	250,000	2,750,000	724
16	Hand washing facility	Pcs	2	250,000	500,000	132
17	Digging	ft	75	25,000	1,875,000	493
18	Transport	Lumpsum	1	380,000	380,000	100
19	Labour	Lumpsum	1	2,500,000	2,500,000	658
	TOTAL				14,447,000	3,802